



LANDKREIS LÜNEBURG

# BIKE-SHARING CARGO BIKE

INSTRUCTIONS  
URBAN ARROW FAMILY



## BOOK THE CARGO BIKE

- Create an account on the website [www.lastenrad-lueneburg.de](http://www.lastenrad-lueneburg.de), register and book an appointment and pick up the cargo bike
- Cargo bike can be picked up free of charge, current PIN for key safe will be sent by e-mail after booking (key for frame lock, folding lock and battery)

Dezember 2023							Januar 2024						
Mo	Di	Mi	Do	Fr	Sa	So	Mo	Di	Mi	Do	Fr	Sa	So
				1	2	3	1	2	3	4	5	6	7
4	5	6	7	8	9	10	8	9	10	11	12	13	14
11	12	13	14	15	16	17	15	16	17	18	19	20	21
18	19	20	21	22	23	24	22	23	24	25	26	27	28
25	26	27	28	29	30	31	29	30	31				

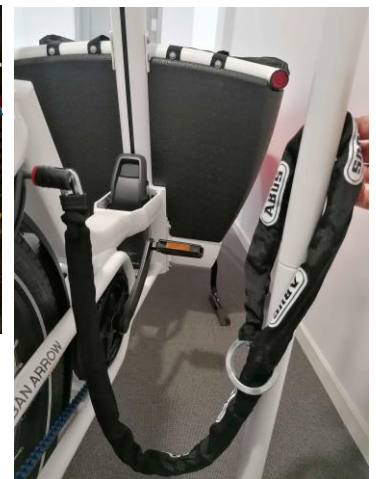
Example for booking

**Place: Kindergarten/Nursery school  
Südergellersen (cargo bike and safe)**

Kirchgellerser Str. 12, 21394 Südergellersen

## RETURN

- **Return the key and battery and charge after use (safe)**
- **Securely lock bike with frame lock (chain and lock) and with folding lock**



## USAGE OPTIONS

- Transport box without cover: transporting children or loads
- Transport box half or full covered (picture 3,4), Max. load 125kg
- **Bicycle with frame lock (always close chain and lock under saddle during breaks) and folding lock (lock both to a fixed object for returning the bike)**



Picture 1



Picture 2



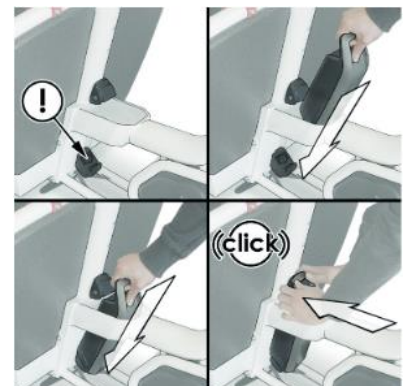
Picture 3



Picture 4

## USE BATTERY AND DISPLAY



- **Battery insertion:** 1) battery switched off, (2) key in battery lock, (3) turn key counterclockwise, (4) place battery with contacts on lower bracket on e-bike, (5) tilt battery until it clicks into place, (6) remove key




- **Battery removal:** (1) turn off battery, (2) insert key into battery lock, (3) turn key counterclockwise, (4) tilt battery out of top part of battery



## DISPLAY/TURNING ON AND OFF THE MOTOR

- Press ON/ OFF  left side, motor starts
- Lights switch  right side, **Lights on is recommended!!**

## SHIFTING GEARS AND ASSISTANCE LEVEL

- Shifting gears: turn the grip shifter on the right
- Assistance level: change with: +/-
- Display change with: < / >
- Push-assistance: press  left button from above and +



## BIKE STAND

- Driving: Lift up the bike stand completely
- Parking: place the stand on the ground, place your foot on the stand and pull the bike towards you



Lifting up the stand to this height

## FURTHER EQUIPMENT

- Key for frame lock, folding lock and battery
- Chain to lock
- Saddle adjustable with quick releases
- Transportation box with cover
- Kids transportation: belts with child safety locks/ magnetic lock



Transportation box with belts